

HARDWOOD FLOORING

TECHNICAL DETAILS

Notes:

Pattern: Plank



Color: Grey

PRODUCT INFO

Species	White European Oak
Finish	UV Silk
Structure	Engineered (2-layer)
Joint	T&G
Bevel	Micro (0,5 mm)
Surface	Light Brush
Grade	Character
DIMENSIONS	
Thickness	15 mm (5/8")
Width	190 mm (7,5")
Row Length	1900 mm (6,25')
Shorts	25%

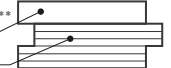
PACKAGING

BOX	32 kg (71 lb)	2,888 m ² (31 ft ²)
	125 mm (5")	200 mm (7,9")
PALLET	1294 kg (2852 lb)	115,52 m ² (1243 ft ²)
	1050 mm (3,45')	1930 mm (6,4')
	1030 mm (3,4')	

STRUCTURE

2-layer Engineered Construction *

Solid wood 4 mm **
Plywood ***



* High Balance and Stability

** Saw Cut White European Oak

*** Birch water resistant plywood

FINISH

Sheen \ Gloss	Matte
Look	Semi-open pores, wire brushed
Feeling	Transfer warms of natural wood
Type	UV cured modified polyurethane-acrylate
Wear resistance	High
Scratch resistance	Medium
Slip resistance	50 (SRV dry)
Resistance to chemical agents	Class 5 (Except blue ink)
Maintenance	Maintenance free
Repairability	Easy

Description

antique wood	worm holes
authentic natural	oak texture
diverse	color variation
sapwood	unlimited burls
brown streaks	tight knots

Character Grade creates an effect of antique wood and emphasizes authentic natural oak texture. Planks may contain diverse color variation, sapwood, unlimited burls, brown streaks, tight knots and properly filled open knots, warm holes as well as other imperfections in the face work (torn grain) to design advantage.

TECHNICAL INFORMATION

Characteristics (EN 14342)		Deviations (EN 13489)	
Formaldehyde emission class	E1; ULEF	Deviation on Thickness	0,2 mm
Pentachlorophenol content	None	Deviation on Width	0,2 mm
Thermal resistance	0,118 m ² K\W	Height Difference	0,2 mm
Thermal conductivity	0,161 W\ (m K)	Cup	<0,2% of width
Fire resistance	Dfl-s1	Bow	<0,5% of length
		Spring	<0,1% of length

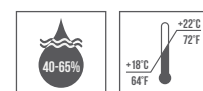
PRODUCT USE

INSTALLATION



Glue down over concrete, plywood or wooden subfloor or nail down over wooden subfloor. Semifloating installation as well. Applicable above, on and below ground level. Suitable for underfloor heating.

STORAGE & USE



Air Humidity 40-65%
Temperature +18°C ... +22°C (64°F ... 72°F)

CARE & MAINTENANCE

Maintenance of hardwood floors with UV Silk assumes normal (daily if necessary) cleaning from dust and grit using a vacuum, followed by a thorough cleaning with floor cleaner. Floor surface areas that receive the most traffic and get worn down quicker, such as areas by the front door, hallways, kitchens etc. should be periodically renewed with oil.

DESCRIPTIONS & IMAGERY

Flooring colors displayed in digital platforms may vary according to the color settings of the monitor you are using.